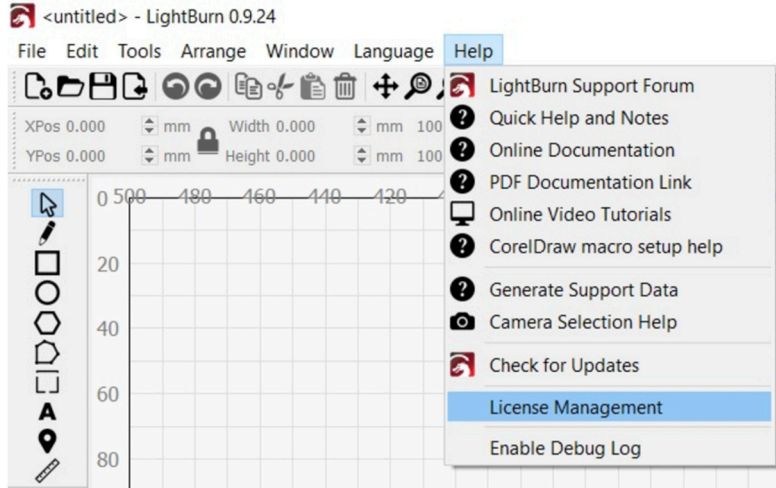
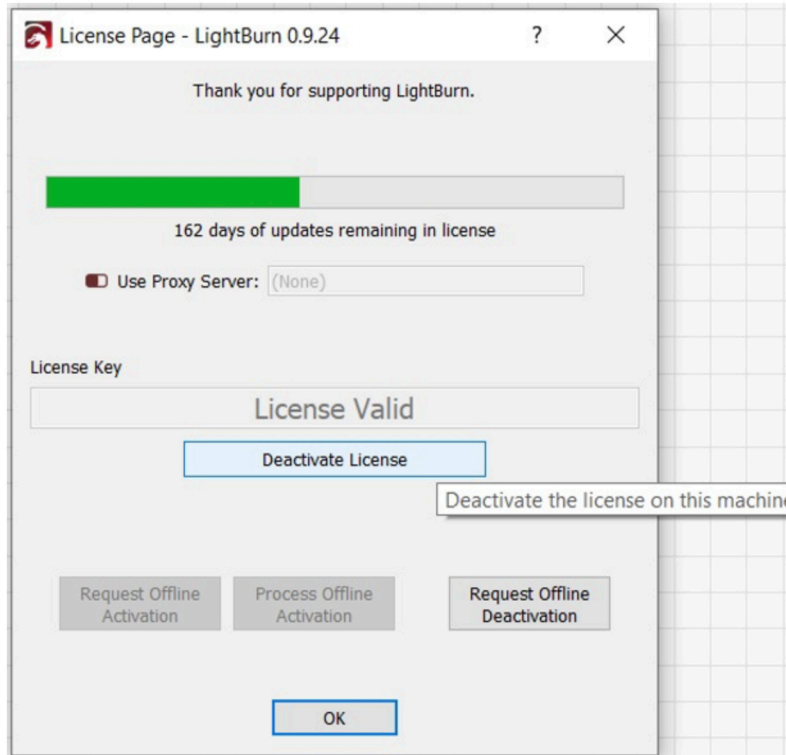


Deactivating your lightburn license to move to a new computer

- 1) Open Lightburn on the computer you wish to remove the linked license from.
- 2) Click 'Help' → 'License Management'



- 3) Click 'Deactivate Machine' to unlink the license from the machine you are currently using.



This machine no longer counts towards your license uses. The key can now be input on your new computer.