

**Introducing the Lasertech Pro Series:
Revolutionise Your Workflow With Reliable, Easy to Use Laser**



Easy Control

Control your Desktop CO2 Laser with ease using the supplied software, Import files via USB Stick and edit on the fly.



Software Included

With all desktop and pro models, we supply Lightburn CAD/CAM software, easy to use and with an excellent array of valuable features.



80W RECI Laser Tubes

As standard on all of our desktop lasers, we include genuine RECI laser tubes. As we are the UK's main RECI dealer we also hold plenty of stock/spares.



Motorised Z Adjustment

This allows you to process thicker items in your laser cutter. Its motorised Z is perfect for engraving trinkets and blanks.



X2 Types of Cutting Bed

Low Contact Blade and Honeycomb Cutting beds included for exceptional, seamless, high-quality performance!



Spacious Cutting System

With options from 400 x 600 to 1300 x 900 our Pro series is perfect for a wide range of projects whether you're a school or industrial business.



Rotary Device

We supply rotary devices with all of our Pro Laser Cutters, perfect for engraving glasses, tubes and anodised yeti cups. Personalisation has never been easier.



Camera Support (Upgrade)

Why not upgrade to our camera system with full support in Lightburn software? Perfect for tracing or positioning ask the team about this upgrade.



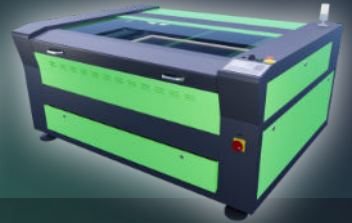
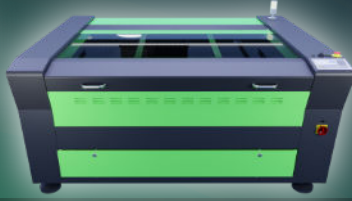
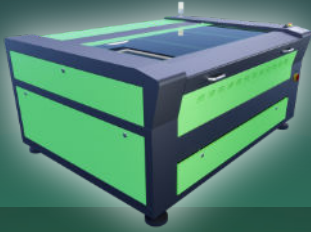
Genuine S&A Chillers

All of our laser cutters come supplied with a suitable S&A chiller with upgrades available.



Air Assist

The Pro Laser cutting and engraving system come with integrated air assist enhancing the output by removing debris from the cutting and engraving area.



Standard Extraction

Our Lasertech CO2 Laser Cutters come with vent-to-atmosphere extraction systems, however, we also supply both Purex and BOFA air filtration units (upgrade).



Safety Glasses

We supply a set of safety glasses with all of our machines. If you require more than the standard set, please let us know.



Installation & Training

Our installation team carries out installation and safety training, giving you the confidence to use the machine before they leave.



Excellent After Sales Support

Our after-sales service is UK based and available to all of our customers if needed. Lifetime technical support via email and telephone.



UK Warranty

All Lasertech laser cutters come with our excellent 12-month parts & labour warranty (does not include consumables).

Lightburn Camera (Optional) Fully compatible.

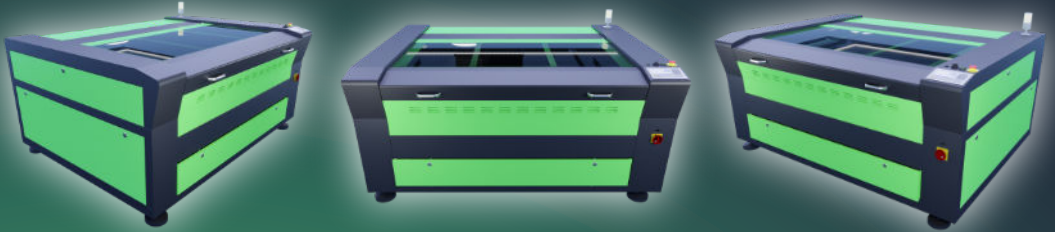


Great for **positioning your artwork** onto your material rather than guessing and doing things by eye only. It's also a very efficient way of optimising and using all of your offcuts and scrap.



With the **built-in tracing functions of Lightburn** you can combine these with the camera to give you **powerful object tracing capabilities**. Got a logo on paper, easily trace it using your Lightburn camera and convert to cut paths.

“Perfect for tracing designs and logos in the classroom, business or at home”

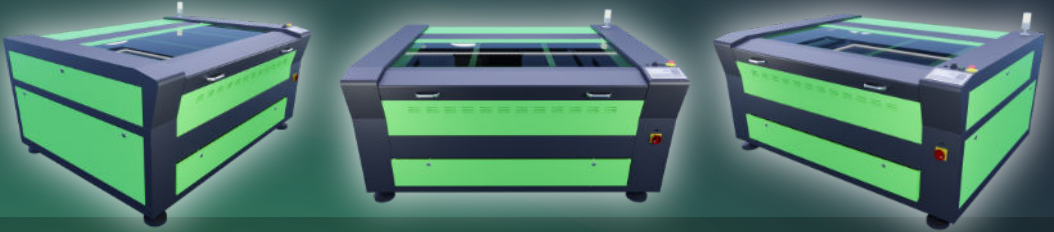


Easy to use, reliable CO2 Lasers

Main features



Bed sizes (mm)	400 x 600 (4060), 600 x 900 (6090), 1300 x 900 (90130)
Bed type	Honeycomb bed & low contact blade system
Motorised Z table (up/down)	Yes
Industrial water chiller	Genuine S&A Water Chillers Included
CO2 laser tube	RECI Laser Tubes – 80W
Air assist	Yes (helps to remove debris and cools material)
Rotary device	Included
Safety glasses	Included
Extraction system	Yes – Standard vent to atmosphere, with upgrades to a Purex or BOFA filtration system available.
Software package	Lightburn Included
Safety features	Interlocks, emergency stop, full enclosure
Delivery	UK Mainland included. (offloading and siting option available if required).
Installation	Our professional installation team will fully commission your new machine – It is the customer's responsibility to ensure they have the correct electrical and air outputs (we will advise you on what is required).

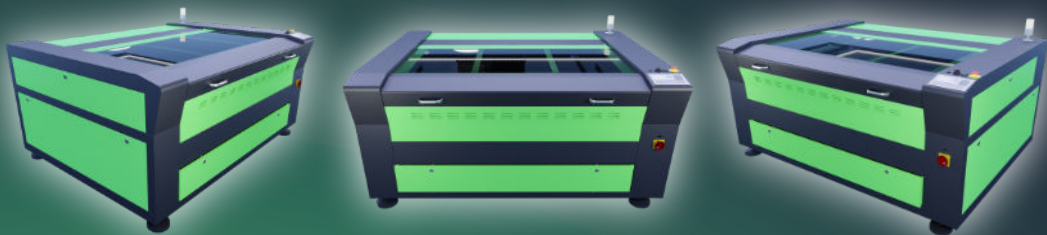


Machine dimensions

Model	4060
Length	1460 mm (with tube)
Depth	930 mm
Height	900 mm
Weight	Appx 185kg

Model	6090
Length	1500 mm (with tube)
Depth	1130 mm
Height	900 mm
Weight	Appx 215kg

Model	90130
Length	1875 mm (with tube)
Depth	1450mm
Height	900 mm
Weight	Appx 265kg



FAQ's

Why choose the Lasertech Pro range?

The Lasertech Pro CO2 Laser range provides customers with a larger format, while still maintaining fast and reliable performance. It's designed to be user-friendly, making it easy to operate. Moreover, the system comes with a complete turnkey package that ensures customer satisfaction.

Do you supply software with the machine?

Yes, all of our Pro laser cutters come with impressive software called Lightburn. You can download a free trial from their website. Better software for your laser cutter than RDworks which is the usual standard with RUIDA-based control systems.

Is training and delivery included?

All of our laser cutters include our standard UK mainland delivery and include full training on your new machine and how to operate the software to send jobs to be cut or engraved.

Do they come with extraction?

Yes, our Pro Laser comes with our standard vent-to-atmosphere extraction, although this is usually ok for most customers, we also supply optional filtration systems that have a set of filters to filter out particulates from the cutting process (our educational and office-based customers usually opt for this).

Do you supply materials, consumables and parts?

You can purchase your materials from a wide range of suppliers, in fact, we also supply a selection of acrylic materials that are suitable for laser cutting over at our parts and consumables site www.mantechparts.co.uk

all cut down to the appropriate size (free of charge) for the bed size of your machine. We also stock a wide range of spares and consumables such as mirror packs, lens, laser tubes and more.